

# VELOCITY BUSINESS PARK

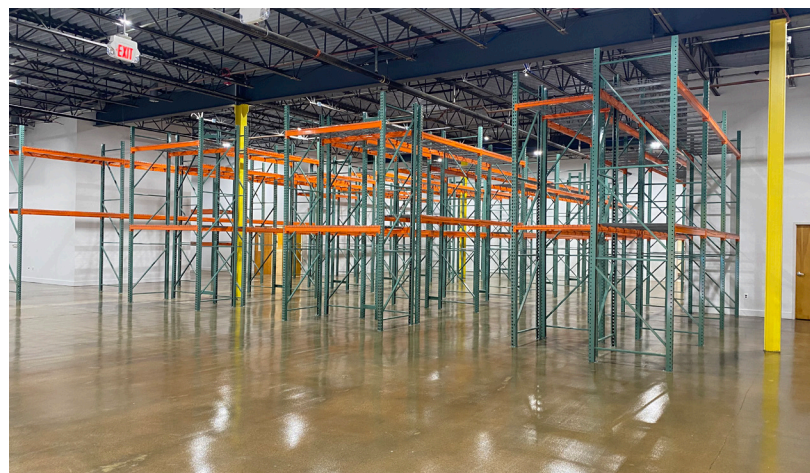
STOW ROAD | MARLTON, NJ

**AVAILABLE  
FOR LEASE**



**INDUSTRIAL UNITS FOR LEASE FROM 6,000 - 12,000 SF**

**RENOVATIONS RECENTLY COMPLETED AT THIS PRIME EXIT 4 LOCATION**



**FOR MORE INFORMATION**

**Jonathan Klear**

☎ +1 856 433 1801

✉ [jonathan.klear@naimertz.com](mailto:jonathan.klear@naimertz.com)

**NAI Mertz**

📍 NAI Mertz | 21 Roland Avenue  
Mount Laurel, NJ 08054

+1 856 234 9600 | [naimertz.com](http://naimertz.com)





# CURRENT AVAILABILITIES

## VELOCITY BUSINESS PARK STOW ROAD | MARLTON, NJ

### ABOUT VELOCITY BUSINESS PARK

Velocity Business Park is a light industrial complex located minutes from Routes 73, 70, I-295 and the NJ Turnpike. Institutional-quality construction provides a professional setting for all industrial and office users. The buildings boast efficient layouts, direct access entrances / loading and tenant control of utilities. VBP is currently home to a mix of twenty publicly-traded, regional and local businesses. Units range from 3,000 to 20,000 SF and feature a mix of loading dock / drive-in configurations.

**8 STOW ROAD** **FULLY LEASED**

9 STOW ROAD	SF	CEILING HT	LOADING
SUITE E *	12,266	17'	2 DI

\* FULLY AIR CONDITIONED

**10 STOW ROAD** **FULLY LEASED**

**12 STOW ROAD** **FULLY LEASED**

14 STOW ROAD	SF	CEILING HT	LOADING
SUITE 100	6,018	14'	1 DI

OFFICE SPACE CAN BE BUILT TO SUIT

EASY ACCESS TO  
NJ TURNPIKE & I-295



### FOR MORE INFORMATION

**Jonathan Klear**  
 +1 856 433 1801  
 jonathan.klear@naimertz.com





# SITE PLAN

## VELOCITY BUSINESS PARK STOW ROAD | MARLTON, NJ



14  
STOW  
ROAD

12  
STOW  
ROAD

10  
STOW  
ROAD

9  
STOW  
ROAD

8  
STOW  
ROAD

SUITE 200 - LEASED  
SUITE 150 - LEASED  
SUITE 100 - AVAILABLE

SUITE 100 - LEASED  
SUITE 130 - LEASED  
SUITE 140 - LEASED  
SUITE 200 - LEASED  
SUITE 210 - LEASED

SUITE 50 - LEASED  
SUITE 150 - LEASED  
SUITE 200 - LEASED  
SUITE 100 - LEASED

SUITE 100 - LEASED  
SUITE 110 - LEASED  
SUITE 120 - LEASED  
SUITE 130 - LEASED  
SUITE 160 - LEASED  
SUITE 200 - LEASED

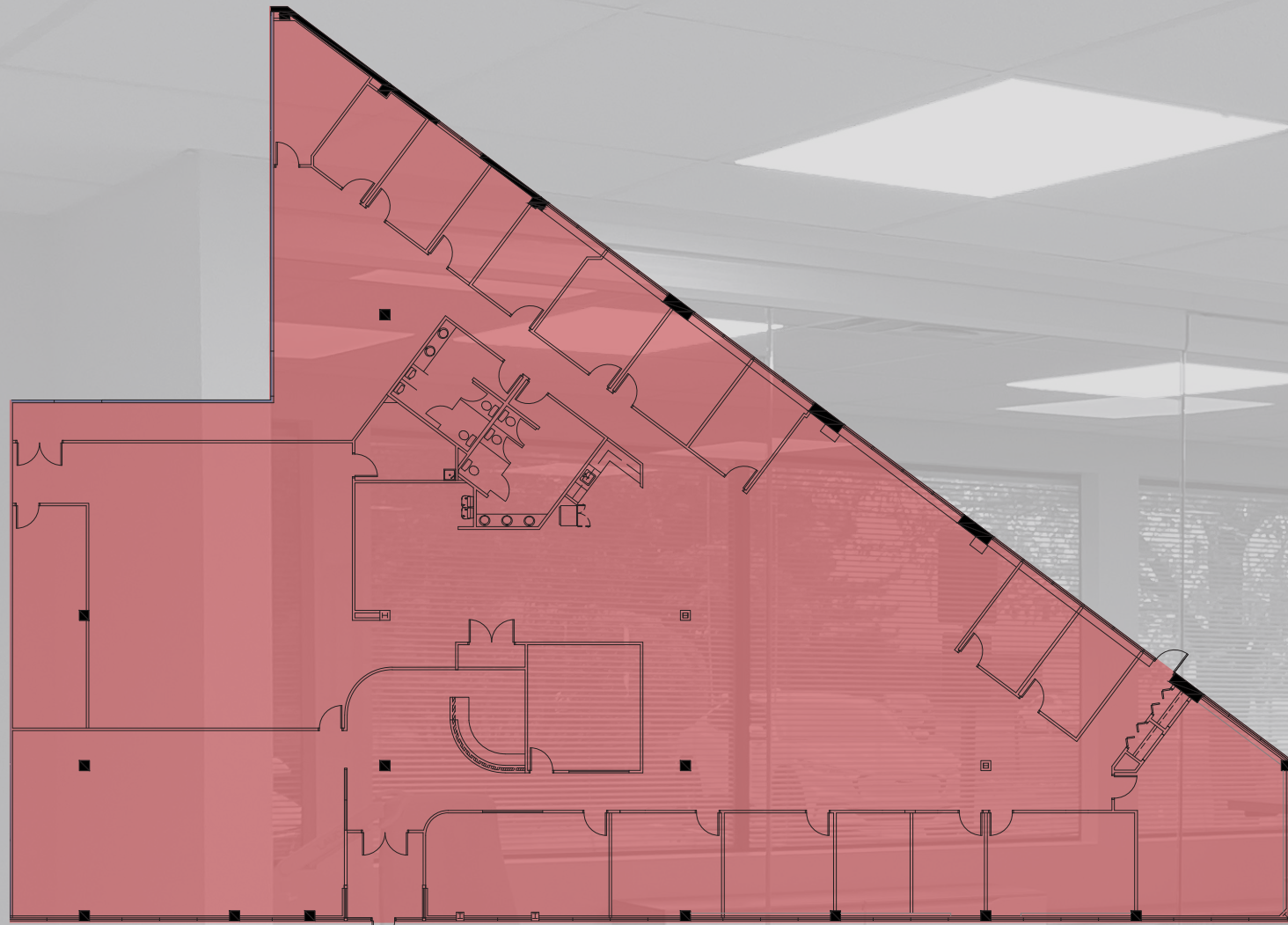
SUITE A - LEASED  
SUITE A1 - LEASED  
SUITE B - LEASED  
SUITE C / D - LEASED  
SUITE E - AVAILABLE



# FLOORPLANS

VELOCITY BUSINESS PARK  
STOW ROAD | MARLTON, NJ

9 STOW ROAD | 12,266 SF



1 FIRST FLOOR OFFICE PLAN  
EC SCALE: 1/8" = 1'-0"

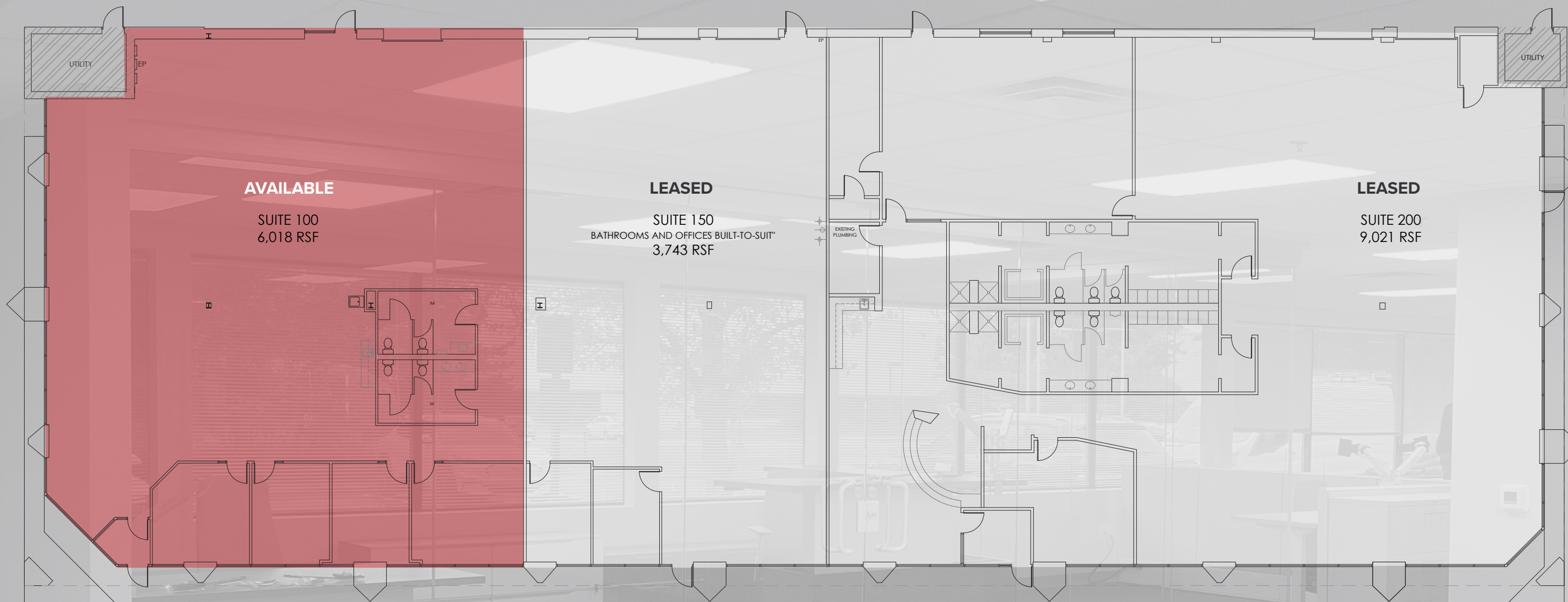




# FLOORPLANS

VELOCITY BUSINESS PARK  
STOW ROAD | MARLTON, NJ

14 STOW ROAD | 6,018 SF AVAILABLE



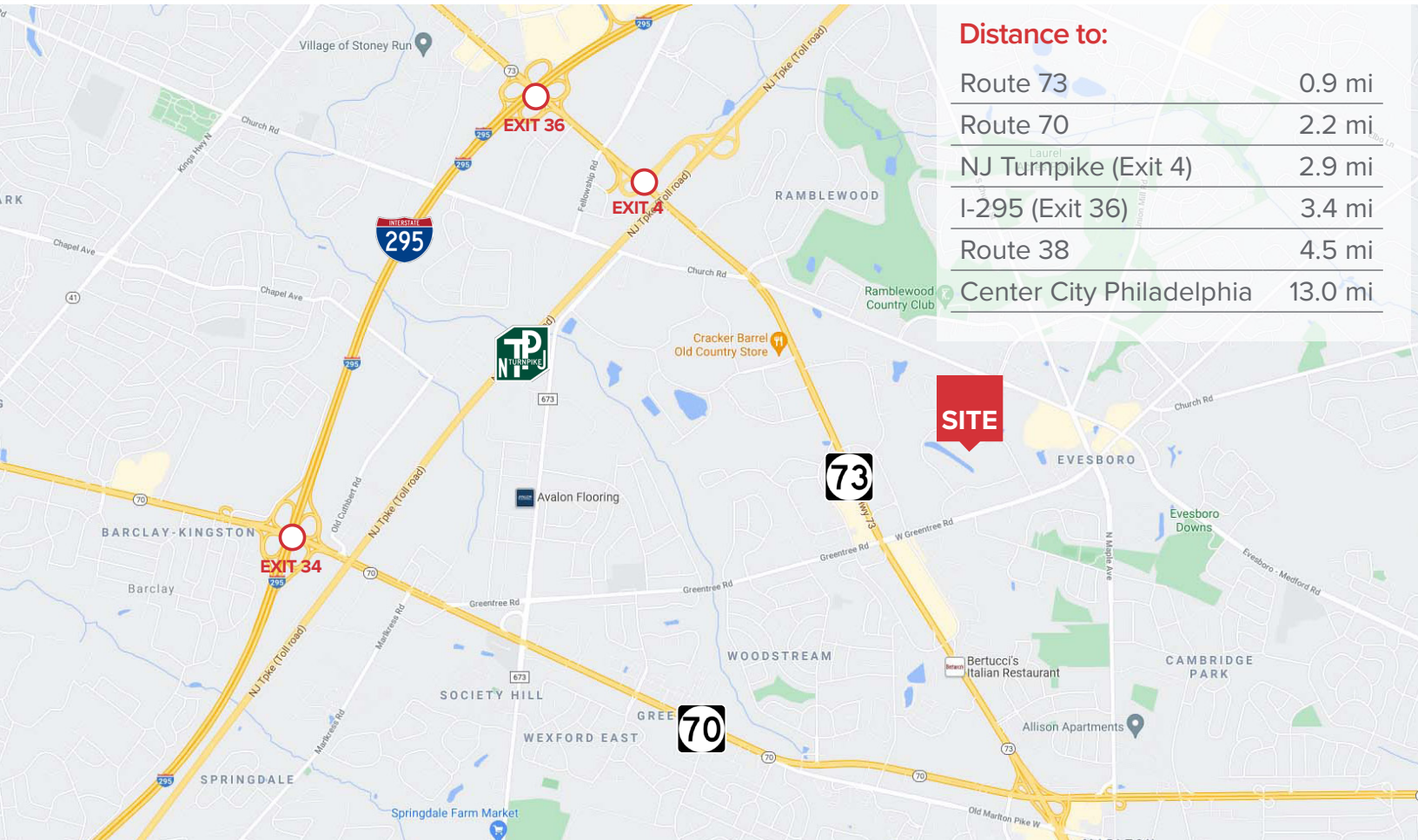
1 EXISTING FLOOR PLAN  
EC SCALE: 1/8" = 1'-0"



# LOCATION INFORMATION

## VELOCITY BUSINESS PARK

STOW ROAD | MARLTON, NJ



### Distance to:

Route 73	0.9 mi
Route 70	2.2 mi
NJ Turnpike (Exit 4)	2.9 mi
I-295 (Exit 36)	3.4 mi
Route 38	4.5 mi
Center City Philadelphia	13.0 mi

## NEW OWNERSHIP

### ABOUT VELOCITY VENTURES

Velocity Venture Partners is a leading developer of industrial real estate throughout New Jersey and Pennsylvania. The firm devotes its time exclusively to distribution, fulfillment and manufacturing style assets that are located close to densely populated suburban corridors and major transportation arteries. The team currently owns and operates over 7 million square feet of industrial space throughout the region - a portfolio comprising 200 tenants and 70 properties. Velocity was founded by Gloucester County-native Tony Grelli and Montgomery County-native Zach Moore. Learn more at [www.velocityinv.com](http://www.velocityinv.com)



VELOCITY VENTURES

## LEASING

### ABOUT NAI MERTZ



NAI Mertz, a leading full-service commercial real estate firm, was named an NAI Global Office of the Year. NAI Global has more than 375 offices globally with over 6,000 local market professionals, managing in excess of over 1.15B square feet of property. NAI Mertz is based out of four local offices in Mount Laurel, NJ; Philadelphia, Bucks County and Wilkes-Barre, PA.

## FOR MORE INFORMATION

**Jonathan Klear**

+1 856 433 1801

[jonathan.klear@naimertz.com](mailto:jonathan.klear@naimertz.com)



NAI Mertz | 21 Roland Avenue  
Mount Laurel, NJ 08054

+1 856 234 9600 | [naimertz.com](http://naimertz.com)

